



JenksIncRealty

Saluda River Retreat

Recreational, Residential

9000 Highway 25 N, Ware Shoals, SC 29692

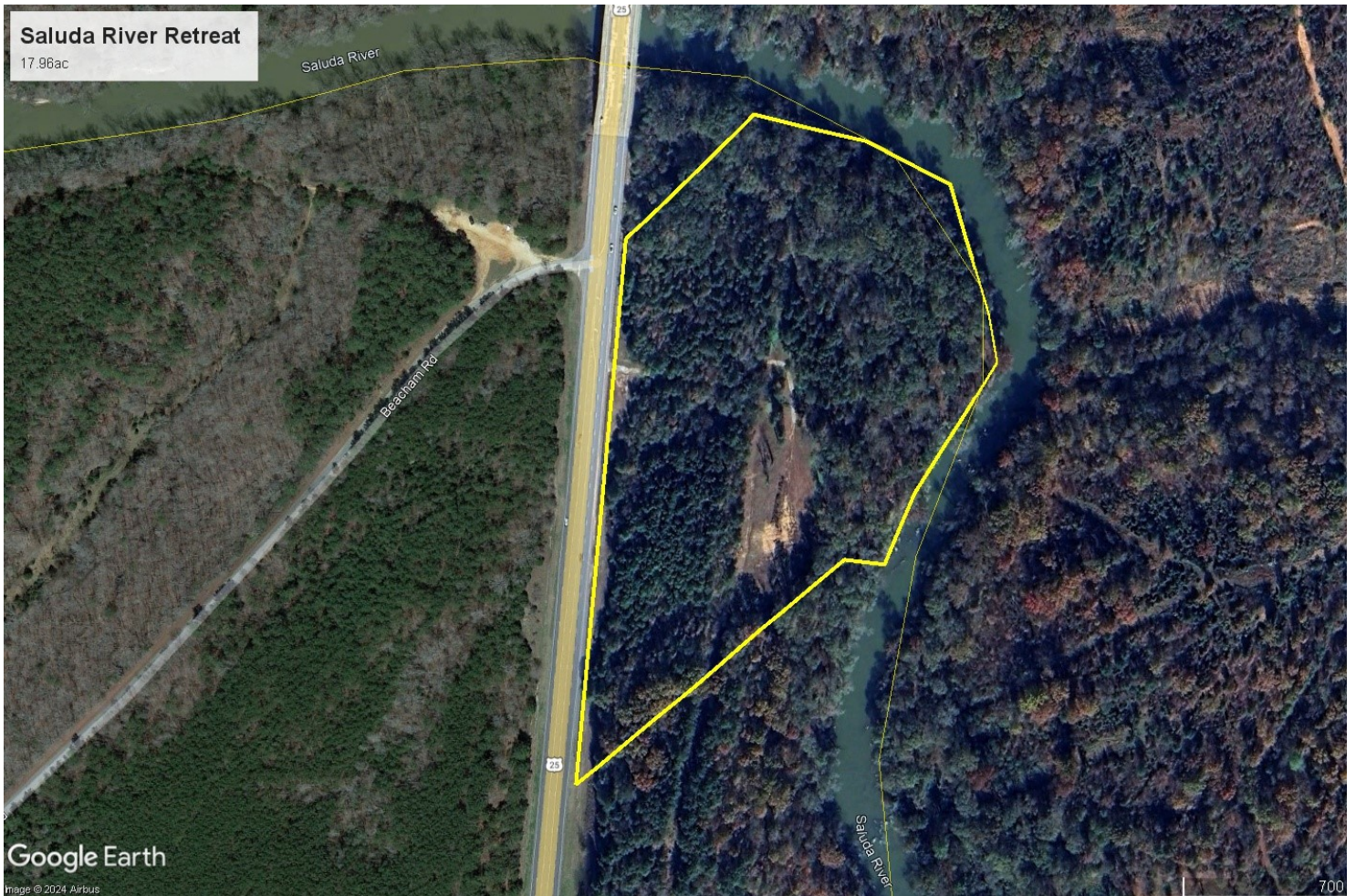
Price: \$375,000

Acreage: 17.96

County: Greenwood

Parcel Tax ID: 6923-971-070

MLS #: 1524045



David Jenkins Patrick

Cell: (864) 506-0416 Email: Jenks@JenksIncRealty.com

www.jenksincrealty.com 864-631-2770



JenksIncRealty

Saluda River Retreat

Recreational, Residential

Convenient, yet private tract on the Saluda River near Ware Shoals, SC. Bring the family to camp, fish, hunt, or explore. You can take a small craft all the way to Lake Greenwood!

Owner has cleared house sites out of the flood plain area and made nice open recreational areas convenient to the river. There are also spots to store equipment. It even comes with a brand new storage building that can be finished out as a cabin.

Road frontage on Highway 25. Electric, public water and sewer are available.

Short 15 minute drive to Greenwood and 45 minutes to Greenville.

To set up
a showing
call:

David Jenkins Patrick

Cell: (864) 506-0416 Email: Jenks@JenksIncRealty.com
www.jenksincrealty.com 864-631-2770



JenksIncRealty

Saluda River Retreat

Recreational, Residential



To set up
a showing
call:

David Jenkins Patrick

Cell: (864) 506-0416 Email: Jenks@JenksIncRealty.com
www.jenksincrealty.com 864-631-2770



JenksIncRealty

Saluda River Retreat

Recreational, Residential



To set up
a showing
call:

David Jenkins Patrick
Cell: (864) 506-0416 Email: Jenks@JenksIncRealty.com
www.jenksincrealty.com 864-631-2770